

YFD

YingFuDa Micro Motor Co Ltd

盈富达微电机有限公司

Motor outgoing specification

Customer : _____

Model No. : YFD545-17190-73

Specification No. : 170902c

Revision : A0

Date : 2017.9.2

CONFIRMED & ACCEPTED BY CUSTOMER
COMPANY, CHOP & SIGNATURE

DATE :

PREPARED BY: YWjiang2/9-17 CHECKED BY: _____ APPROVED BY: _____.

Motor outgoing specification

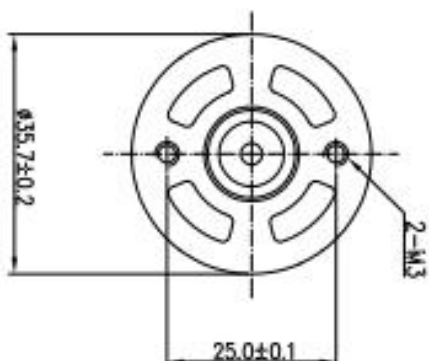
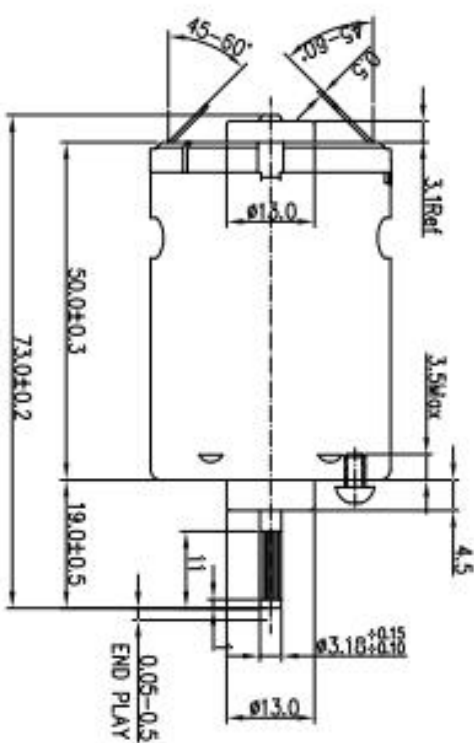
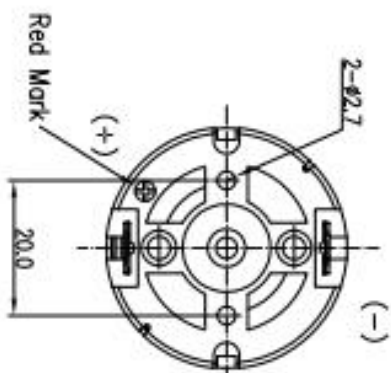
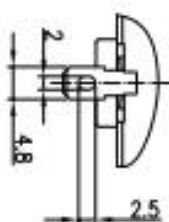
Model No:YFD545-17190-73

Sample No:170902c

- 1. Motor Type:** Small DC motor
- 2. Standard Operating Conditions:**
- 2-1 Rated Voltage: 55.0V DC CONSTANT between motor terminals.
 - 2-2 Direction of Rotation: CCW when viewed from output shaft side.
- 3. Measuring Conditions:**
- 3-1 Motor Position: Motor to be held with shaft horizontally.
 - 3-2 Power Supply: Regulated power supply which assures unquestionable measurement.
 - 3-3 Environment Temperature and Humidity: The test is made in principle at a temperature between 15°C and 35°C and at a relative humidity 75%.
- 4. Electrical Characteristics (at initial stage after 30 seconds run-in):**
- 4-1 No Load Current: 0.13A max.
 - 4-2 No Load Speed: 9000±10% rpm.
 - 4-3 No Load Starting Voltage: 2.0Vmax
 - 4-4 Rated Load Current: 0.75±12%A .
 - 4-5 Rated Load Speed: 7120±10% rpm.
 - 4-6 Rated Load: Fan load with size 30x80mm(approximately equivalent to 380.0g-cm.)
 - 4-7 Reference Characteristic Curve: See Motor Performance Curves And Characteristics.
 - 4-8 Insulation Resistance: 10 M ohm(min) (DC:500V)
between motor terminal and motor metal housing
 - 4-9 Dielectric Strength: AC 500V(50Hz to 60Hz) for one minute
between motor terminal and motor metal housing
- 5. Mechanical Characteristics:**
- 5-1 External Apperance: See Motor Outline
 - 5-2 Shaft End Play: 0.05~0.5 mm
 - 5-3 Runout of Shaft Extension: 0.05 mm max.
- 6.Life:**
- 6-1 Test voltage: 55.0V (Regulated DC power supply)
 - 6-2 Load: Fan load equivalent to 249.0g.cm
 - 6-3 Test cycle: 30 min on, 30 min off is cycle
 - 6-4 Duration: TBD cycle
- 7. Noise test** 68db(A) max/RMS,with following condition.No load at rated voltage,
Set on sponge.Microphone at 30 cm aligned on the motor axis;
background noise-level is 30dB(A)Max/RMS.
- 8. Amplitude test** ≤4.9mm/s
- 9. Insulation Grade:** Class B

- 1) WHEN PRESS FITTING A GEAR/PULLEY OR ANYTHING ALIKE ONTO MOTOR OUTPUT SHAFT, DO PUSH THE OTHER SHAFT END VERTICALLY, DON'T PUSH THE REAR BRACKET
- 2) SOLDERING TEMPERATURE AND TIME MUST BE 360(±5SEC) OR 400(±5SEC)
- 3) MEASURING THE DIMENSION OF THE SHAFT EXTENSION WHEN THE OTHER

ISSUE NO :



CONFIRMED & ACCEPTED BY CUSTOMER
Company, Chop & Signature

TITLE: MOTOR OUTLINE

PART NO: YFD545-17150-73

DES'D	WJiang/9-17
CHK'D	
APP'D	
SCALE	1:1
	REV
	ADD

TIME

WAS

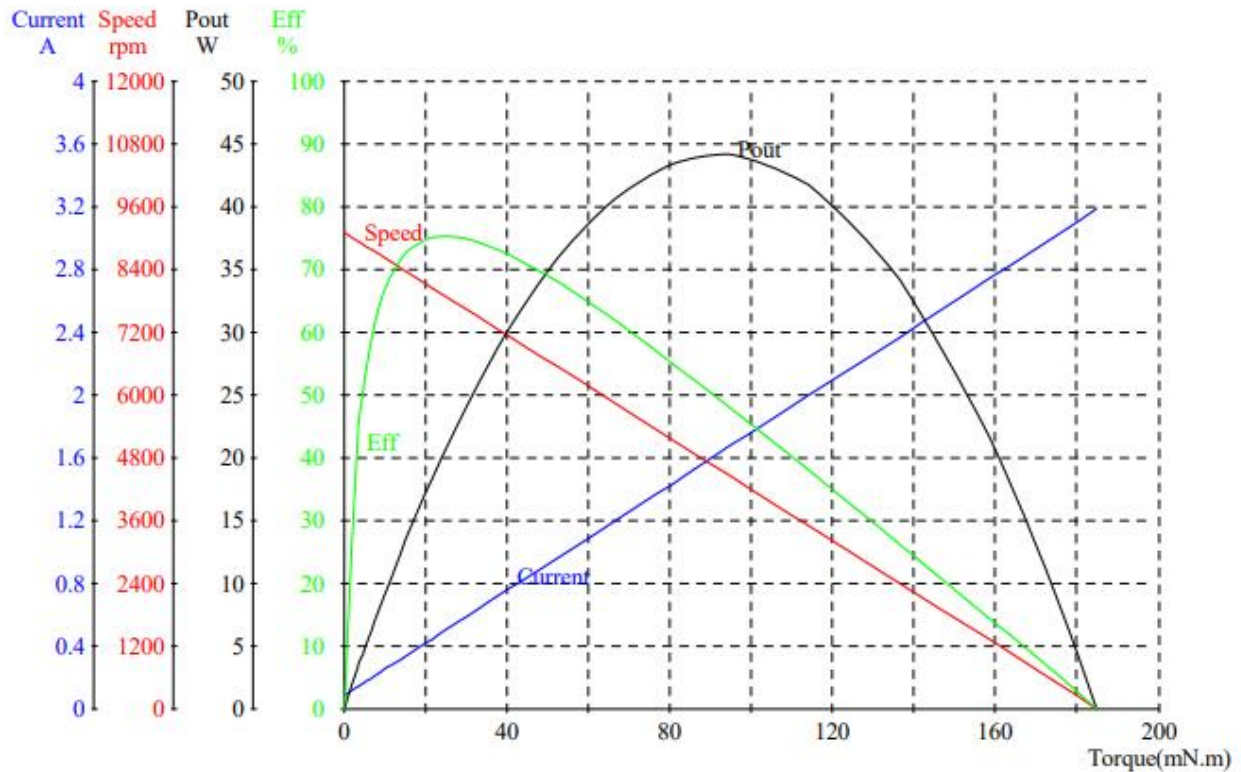
DATE	DES'D	APP'D	DATE:
------	-------	-------	-------

YingFuDa Micro Motor



Motor performance curves and characteristics:

Customer:	Voltage: 55V
Product Name	Power rated:
Motor Type: YFD545-17190-73	Tester: 001
Number: 170902c	Test Data: 2017.09.02



State	电压	电流	输入功率	转矩	转速	输出功率	效率
	V	A	W	mN.m	rpm	W	%
No_Load	55.10	0.157	8.656	3.3	8869	3.074	35.5
Rated							
Eff_max	55.10	0.586	32.29	30.4	7623	24.26	75.1
Pout_max	55.10	1.787	98.47	99.4	3980	41.43	42.1
End	55.10	1.787	98.47	99.4	3980	41.43	42.1