

# FOSHAN SHUNDE YINGFUDA MICRO MOTOR CO.,LTD

## MOTOR OUTGOING SPECIFICATION

Model No. :YFD595M-L08281-85

REV : 0

---

- 1. Motor Type:** Small DC motor
- 2. Standard Operating Conditions:**  
2-1 Rated Voltage: 18.0V DC CONSTANT between motor terminals.  
2-2 Direction of Rotation: CCW when viewed from output shaft side.
- 3. Measuring Conditions:**  
3-1 Motor Position: Motor to be held with shaft horizontally.  
3-2 Power Supply: Regulated power supply which assures unquestionable measurement.  
3-3 Environment Temperature and Humidity: The test is made in principle at a temperature between 15°C and 35°C and at a relative humidity 75%.
- 4. Electrical Characteristics (at initial stage after 30 seconds run-in):**  
4-1 No Load Current: 0.45A max.  
4-2 No Load Speed: 10000±10% rpm.  
4-3 No Load Starting Voltage: 2.0Vmax  
4-4 Rated Load Current: 1.34±12%A .  
4-5 Rated Load Speed: 9520±10% rpm.  
4-6 Rated Load: Fan load with size25x60mm(approximately equivalent to 190.0 g-cm.)  
4-7 Reference Characteristic Curve: See motor performance curves and characteristics.
- 5. Mechanical Characteristics:**  
5-1 External Apperance: See Motor Outline  
5-2 Shaft End Play: 0.05~0.5 mm  
5-3 Runout of Shaft Extension: 0.05 mm max.
- 6.Insulation Grade: Class B

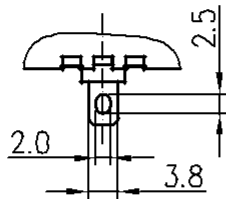
CONFIRMED & ACCEPTED BY CUSTOMER

*COMPANY, CHOP & SIGNATURE*

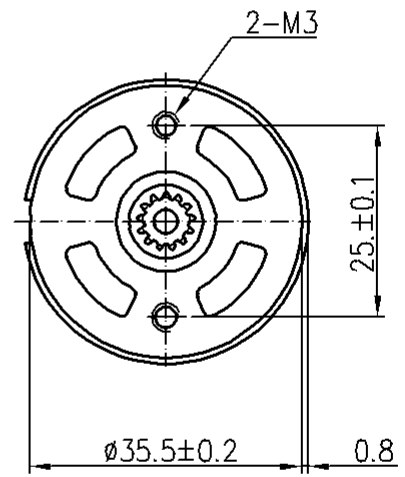
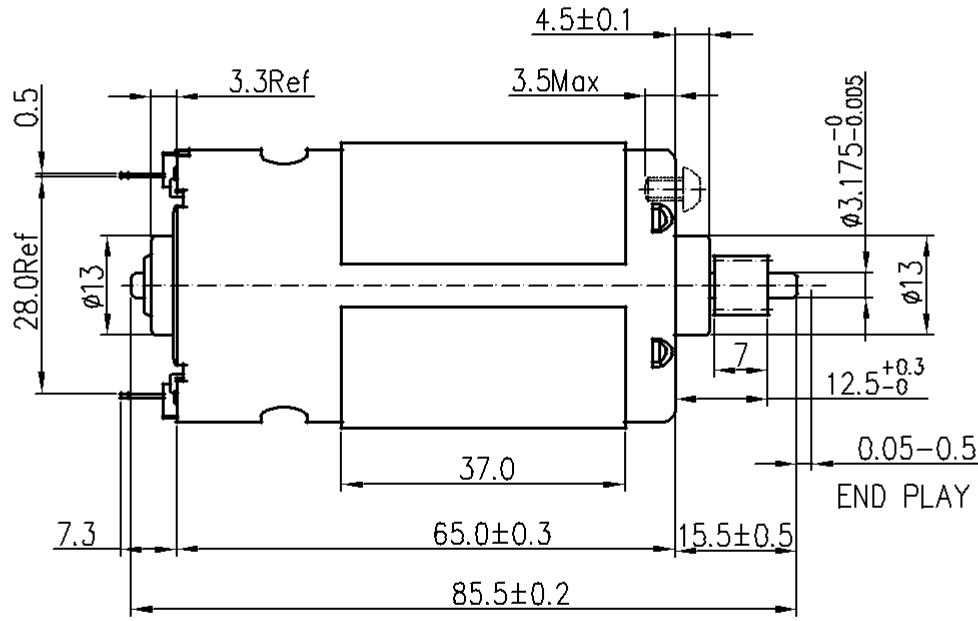
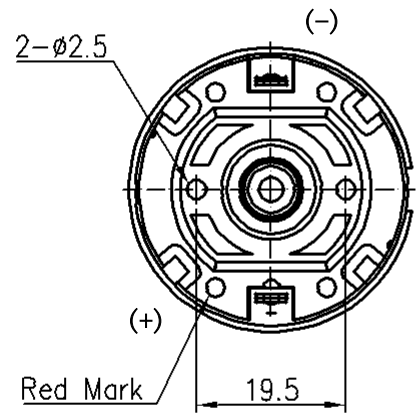
DATE :

REMARKS:  
 1) WHEN PRESS FITTING A GEAR,PULLEY OR ANYTHING ALIKE ONTO MOTOR OUTPUT SHAFT, DO PUSH THE OTHER SHAFT END VERTICALLY, DON'T PUSH THE REAR BRACKET  
 2) SOLDERING TEMPERATURE AND TIME MUST BE 360°(3SEC) OR 400°(2SEC).  
 3) MEASURING THE DIMENSION OF THE SHAFT EXTENSION WHEN THE OTHER END OF THE SHAFT IS AGAINST THE REAR BRACKET END.

SERIAL NO : \_\_\_\_\_ ISSUE NO : \_\_\_\_\_



DIRECTION OF ROTATION



CONFIRMED & ACCEPTED BY CUSTOMER  
 Company, Chop & Signature

TITLE: MOTOR OUTLINE

DES'D YWjiang17/11-23

PART NO: YFD595M-L08281-85

CHK'D

APP'D

SCALE 1:1 REV A0

YingFuDa Micro Motor

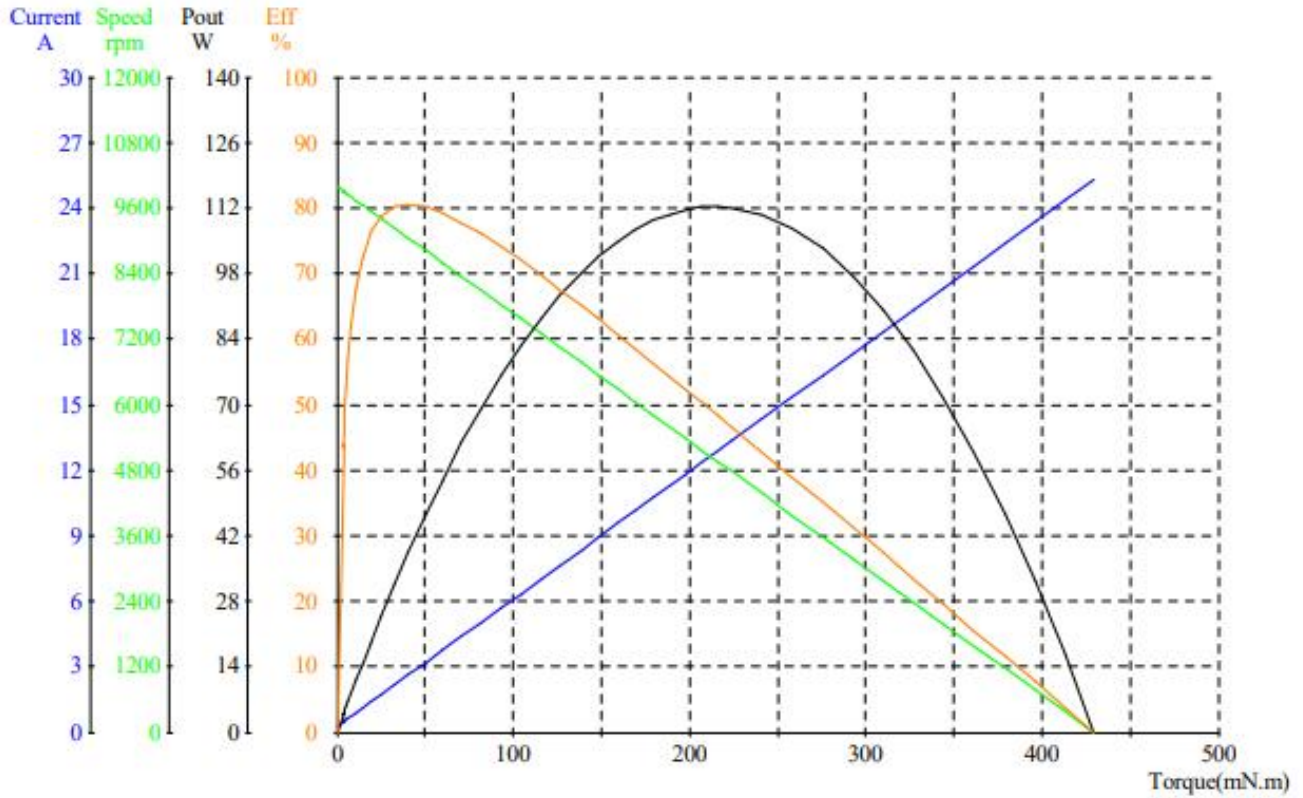


ITME WAS DATE DES'D APP'D DATE:

### Motor performance curves and characteristics:

Customer:	Voltage: 18.0V
Motor Type: YFD595M-08281-85	Tester: 001
Test Data: 2021.11.04	

\*\*\*\*\*



State	Voltage	Current	Pin	Torque	Speed	Pout	Eff
	V	A	W	mN. m	rpm	W	%
No_Load	18.06	0.274	4.953	0.0	9990	0.000	0.0
Eff_max	18.06	2.635	47.58	40.5	9048	38.37	80.6
Pout_max	18.05	12.88	232.4	216.3	4959	112.3	48.3
Torque_max	18.03	25.31	456.3	429.5	0	0.000	0.0
End	18.03	25.31	456.3	429.5	0	0.000	0.0

# FOSHAN SHUNDE YINGFUDA MICRO MOTOR

## Motor performance curves and characteristics:

Customer:  
 Motor Type: YFD595M-08281-85  
 Test Data: 2021.11.04

Voltage: 18.0V  
 Tester: 001

\*\*\*\*\*

Number	Voltage V	Current A	Pin W	Torque mN.m	Speed rpm	Pout W	Eff %
1	18.06	0.274	4.953	0.0	9990	0.000	0.0
2	18.06	0.496	8.953	3.8	9902	3.939	44.0
3	18.06	0.490	8.848	3.7	9904	3.837	43.4
4	18.06	0.490	8.848	3.7	9904	3.837	43.4
5	18.06	0.490	8.848	3.7	9904	3.837	43.4
6	18.06	0.507	9.164	4.0	9897	4.145	45.2
7	18.06	0.519	9.374	4.2	9892	4.350	46.4
8	18.06	0.548	9.900	4.7	9881	4.862	49.1
9	18.06	0.589	10.64	5.4	9864	5.577	52.4
10	18.06	0.653	11.79	6.5	9839	6.696	56.8
11	18.06	0.758	13.69	8.3	9797	8.514	62.2
12	18.06	0.915	16.53	11.0	9734	11.21	67.8
13	18.06	1.114	20.11	14.4	9655	14.56	72.4
14	18.06	1.399	25.27	19.3	9541	19.28	76.3
15	18.06	1.737	31.37	25.1	9406	24.72	78.8
16	18.06	2.180	39.37	32.7	9229	31.60	80.3
17	18.06	2.635	47.58	40.5	9048	38.37	80.6
18	18.06	3.212	57.99	50.4	8818	46.53	80.2
19	18.06	3.759	67.88	59.8	8599	53.84	79.3
20	18.06	4.412	79.67	71.0	8339	61.99	77.8
21	18.05	5.036	90.92	81.7	8090	69.20	76.1
22	18.05	5.712	103.1	93.3	7821	76.39	74.1
23	18.05	6.347	114.6	104.2	7566	82.55	72.0
24	18.05	7.035	127.0	116.0	7293	88.56	69.7
25	18.05	7.653	138.1	126.6	7045	93.39	67.6
26	18.05	8.335	150.4	138.3	6773	98.08	65.2
27	18.05	8.929	161.2	148.5	6536	101.6	63.1
28	18.05	9.570	172.7	159.5	6280	104.9	60.7
29	18.05	10.15	183.1	169.4	6050	107.3	58.6
30	18.05	10.75	194.1	179.8	5809	109.3	56.3
31	18.05	11.30	203.8	189.1	5592	110.7	54.3
32	18.05	11.86	214.0	198.8	5366	111.7	52.2
33	18.05	12.36	223.0	207.3	5168	112.2	50.3
34	18.05	12.88	232.4	216.3	4959	112.3	48.3
35	18.04	13.34	240.6	224.1	4778	112.1	46.6
36	18.04	14.34	258.7	241.3	4378	110.6	42.8
37	18.04	15.34	276.7	258.5	3979	107.7	38.9
38	18.04	16.34	294.8	275.7	3578	103.3	35.0
39	18.04	17.34	312.8	292.9	3178	97.45	31.2
40	18.04	18.34	330.9	310.0	2779	90.20	27.3
41	18.04	19.35	348.9	327.2	2379	81.50	23.4
42	18.04	20.35	367.0	344.4	1979	71.36	19.4
43	18.03	21.35	385.0	361.6	1579	59.79	15.5
44	18.03	22.35	403.1	378.8	1179	46.77	11.6
45	18.03	23.35	421.1	396.0	780	32.32	7.7
46	18.03	24.35	439.1	413.2	380	16.43	3.7
47	18.03	25.31	456.3	429.5	0	0.000	0.0